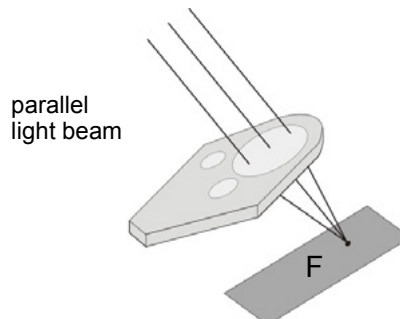


Worksheet 1 (answer sheet): We build a thermal solar plant – With magnifying glass and mirror

Task

Write the following sentences in passive voice.



The sun produces a parallel light beam.

A parallel light beam
is produced by the sun.

The magnifying glass (the convex lens) refracts the parallel light beam.

The parallel light beam
is refracted by the magnifying glass.

After refraction the light rays converge to one point.

After being refracted, the light rays
are converged to one point.

We call this the “focal point”.

This point
is called the “focal point”.

We abbreviate the focal point to the letter “F”.

The focal point
is abbreviated to the letter “F”.

We call the distance between the lens and the focal point the “focal length”.

The distance between
the lens and the focal point is called the “focal length”.

If the magnifying glass (the convex lens) has a small focal length, then the focal point moves towards the lens.

If the magnifying glass (the convex lens)
has a small focal length, then
the focal point is moved towards the lens.