

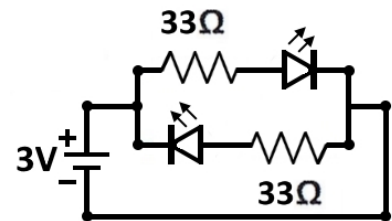
6.3 (1) LEDs (experiment with breadboard)



What are the properties of a light-emitting diode (LED)?

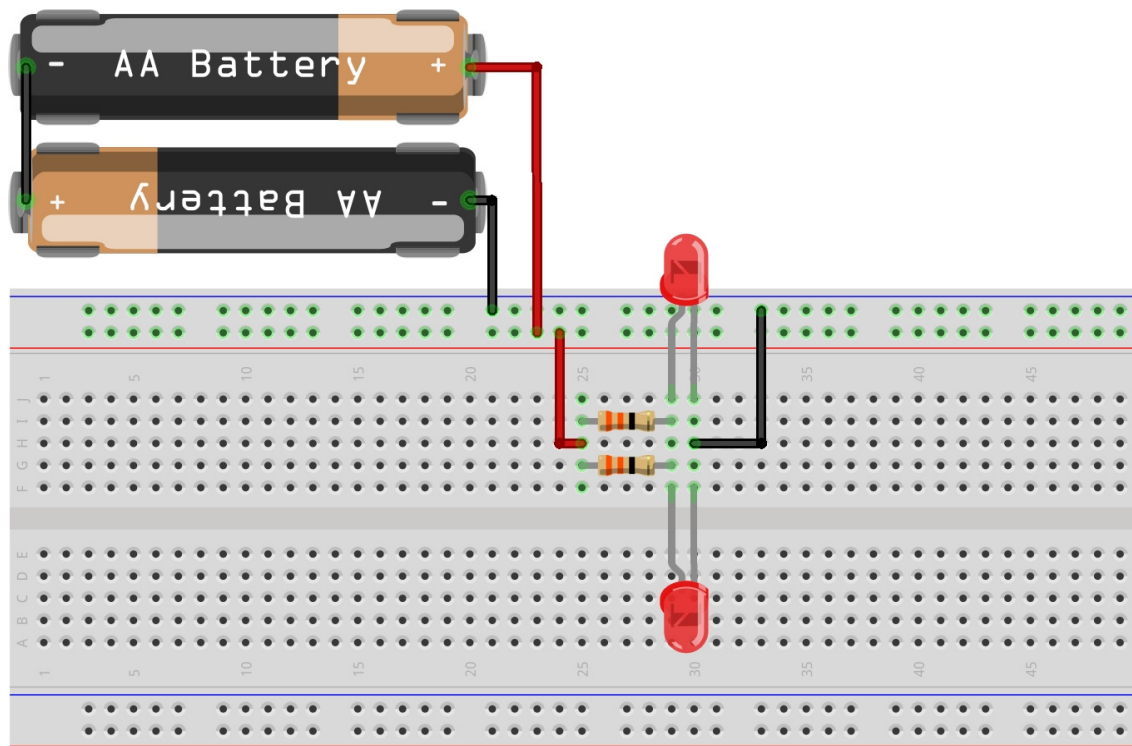


The picture to the right shows you a circuit diagram, and the picture below a breadboard diagram. The breadboard diagram shows how to set up the circuit on a breadboard.



Set up the experiment on the breadboard according to the diagram. Note the different pins of the LEDs and make sure that you insert the LED as on the picture. Apply 3V DC. Reverse the polarity of the power source. Write down your observation.

Note that you need an electronic component (resistor) which you will learn about later.





Observing and documenting:



Analysing and reflecting:

Space for your sketches