

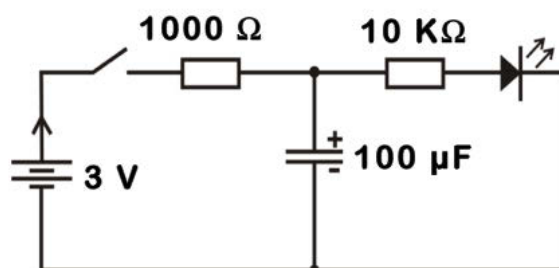
7.2 Capacitors



What are the properties of a capacitor?



- Connect the circuit according to the schematic diagram.
- Make sure to install the LED in the correct direction.
- Close the circuit and observe what happens to the LED.
- Open the circuit and observe what happens to the LED.



Observing and documenting:



Analysing and reflecting:



What happens if you use resistors and/or capacitors with different values in the experiment?



Discuss how the charging and discharging action of a capacitor is used, e.g. to slowly lighten and darken a room.

Space for your sketches